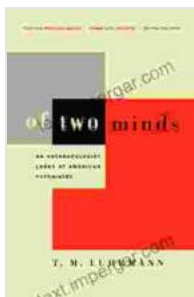


An Anthropologist Looks at American Psychiatry: Exploring the Cultural Lens of Mental Health

In the realm of mental health, the interplay between culture and psychiatric concepts has long captivated the interest of scholars and practitioners alike. Thomas Scheff's groundbreaking book, 'An Anthropologist Looks at American Psychiatry,' stands as a seminal contribution to this discourse, offering a unique anthropological perspective on the social construction and labeling of mental illness in the United States.

Scheff's Anthropological Approach

Scheff's anthropological approach allowed him to critically examine the cultural assumptions and social dynamics that shape our understanding of mental health. By comparing American psychiatric practices to those of non-Western societies, he sought to reveal the ways in which culture influences both the definition and treatment of mental disFree Downloads.



Of Two Minds: An Anthropologist Looks at American Psychiatry by T.M. Luhrmann

★★★★☆ 4.6 out of 5

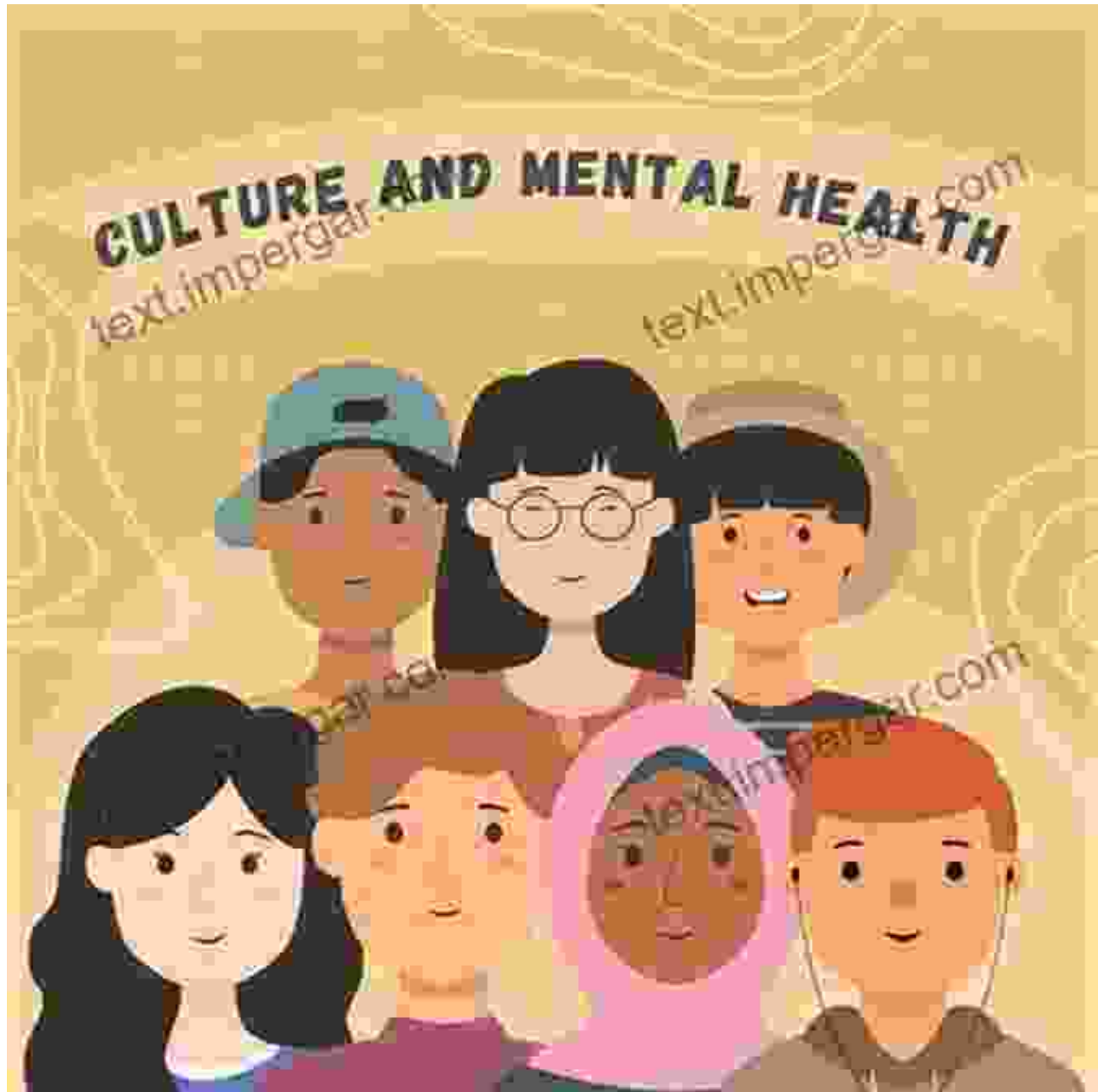
Language : English
File size : 1771 KB
Text-to-Speech : Enabled
Screen Reader : Supported
Enhanced typesetting : Enabled
Word Wise : Enabled
Print length : 353 pages



Central to Scheff's analysis was the concept of "labeling theory." He argued that the labeling of individuals as mentally ill has profound social consequences, potentially leading to stigma, discrimination, and limited opportunities in life.

Social Construction of Mental Illness

Scheff contended that mental illness, as defined in American psychiatry, is not solely a biological or medical condition. Rather, it is heavily influenced by cultural values, beliefs, and social norms. He pointed to the fact that different cultures have varying conceptions of what constitutes "normal" and "abnormal" behavior, and that these conceptions often reflect the dominant social and political ideologies.



Scheff's work challenged the medical model of mental illness, which views psychiatric disorders as primarily biological entities. He argued that this model fails to account for the significant role that social factors play in shaping our experiences of distress and our interactions with the mental health system.

Critique of American Psychiatry

Scheff's book was a groundbreaking critique of American psychiatry, and it raised important questions about the objectivity and validity of psychiatric diagnoses. He pointed out that psychiatric labels often rely on subjective criteria and that they can be influenced by factors such as the patient's socioeconomic status, race, and gender.

Scheff also questioned the effectiveness of psychiatric treatments, such as hospitalization, psychotherapy, and medication. He argued that these treatments often focus on symptom suppression rather than addressing the underlying social and cultural factors that contribute to mental distress.

Cultural Diversity in Mental Health

One of the most valuable insights provided by Scheff's work is the importance of recognizing cultural diversity in mental health. He emphasized that the symptoms, experiences, and treatments of mental disorders vary significantly across different cultures.

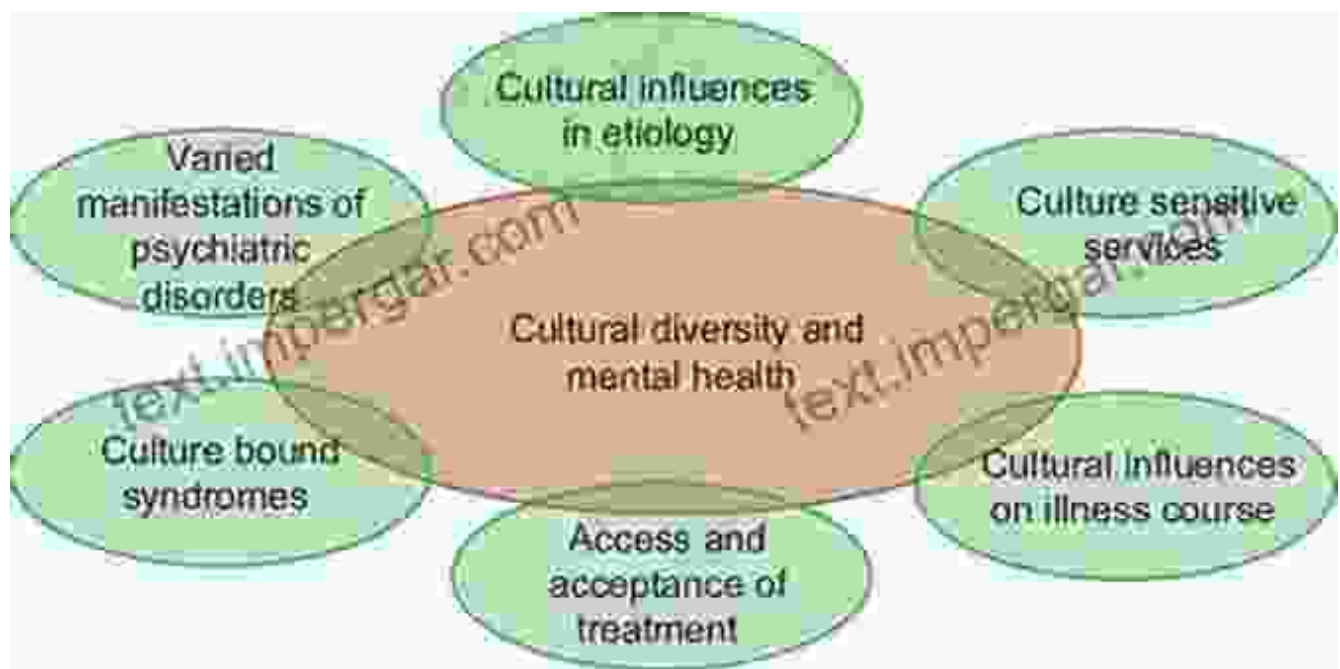


Figure 1: Interaction of cultural diversity and mental health

Scheff's work has informed the development of culturally sensitive approaches to mental health care. It has encouraged practitioners to consider the cultural context of their patients' experiences and to tailor treatments to their specific needs.

Legacy and Impact

'An Anthropologist Looks at American Psychiatry' has had a profound impact on the field of mental health. It has challenged traditional views of mental illness, fostered a more critical understanding of psychiatric practices, and raised awareness of the importance of cultural factors in mental health care.

Scheff's work has influenced generations of researchers, clinicians, and policymakers, and it continues to be a valuable resource for anyone seeking a deeper understanding of the cultural dimensions of mental health.

Thomas Scheff's 'An Anthropologist Looks at American Psychiatry' is a seminal work that continues to resonate with contemporary debates about the nature of mental illness and the role of culture in mental health care. By providing a unique anthropological perspective, Scheff challenged the assumptions of American psychiatry and opened up new avenues for research and understanding. His work remains an essential reading for anyone interested in the complex interplay between culture and mental health.

Of Two Minds: An Anthropologist Looks at American Psychiatry by T.M. Luhrmann

★★★★☆ 4.6 out of 5

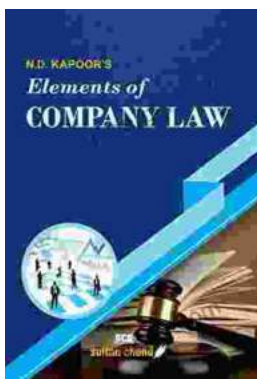


Language : English
File size : 1771 KB
Text-to-Speech : Enabled
Screen Reader : Supported
Enhanced typesetting : Enabled
Word Wise : Enabled
Print length : 353 pages



Charles The Bold Illustrated: An Epic Journey Through Life, Love, and Legacy

Step into the captivating world of Charles the Bold, Duke of Burgundy, as renowned historian Robert Schlesinger presents a meticulously illustrated masterpiece that breathes...



Unveiling the Ultimate Guidebook for Commerce Professionals: For Com LLB CA CS CMA COM MBA and Other Commerce Courses

Embark on a comprehensive journey through the multifaceted world of commerce with "For Com LLB CA CS CMA COM MBA and Other Commerce Courses." This definitive guidebook is...