

Unveiling the Interplay of Race, Space, and Capital in Southern California: A Journey Through Time

Prepare to delve into a captivating narrative that unravels the intricate connections between race, space, and capital in Southern California. This profound exploration, meticulously crafted by renowned scholars, embarks on a journey through time, tracing the interplay of these forces that have shaped the region's identity and destiny.



Inland Shift: Race, Space, and Capital in Southern California

★★★★★ 5 out of 5

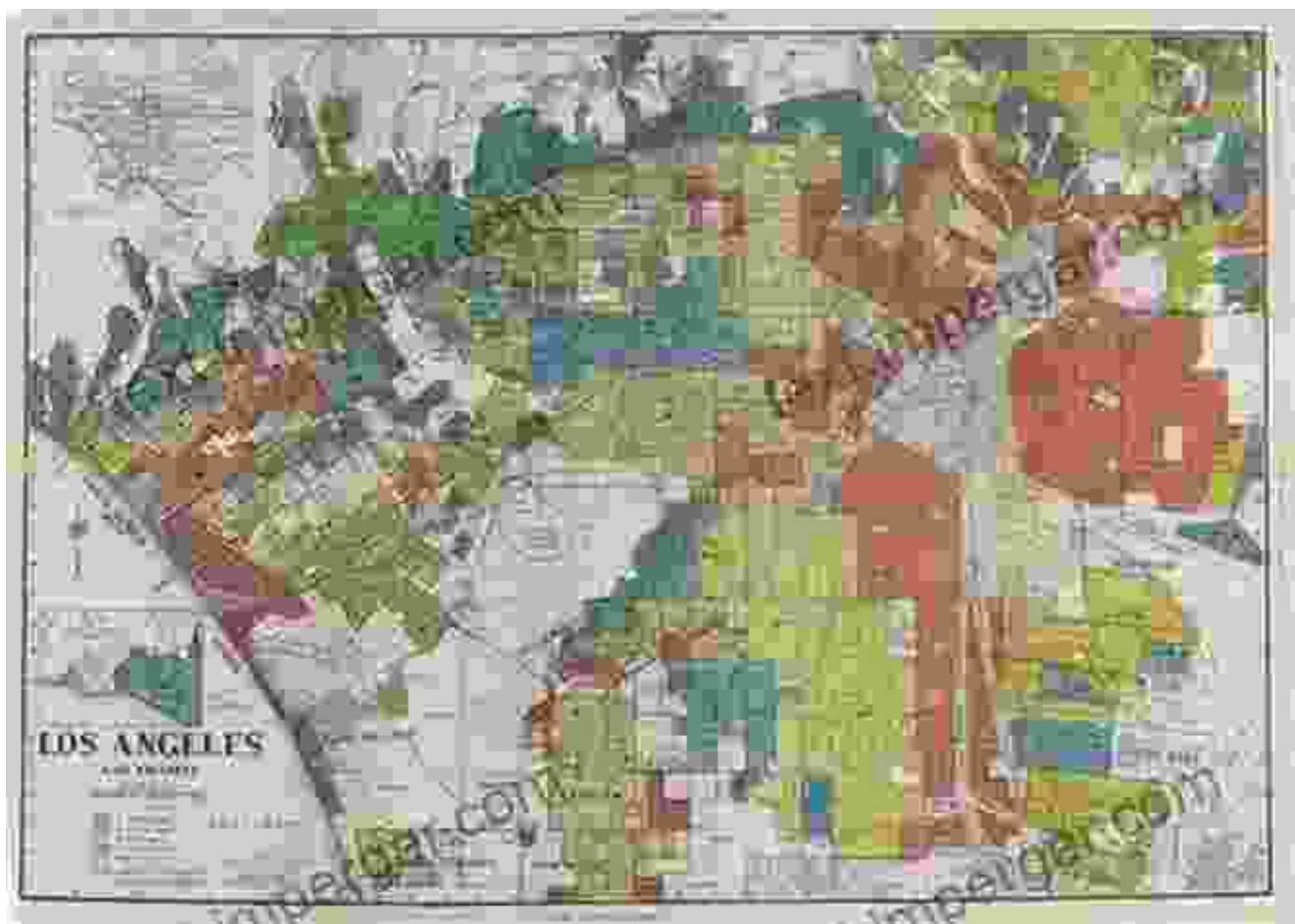
Language : English
File size : 7844 KB
Text-to-Speech : Enabled
Screen Reader : Supported
Enhanced typesetting : Enabled
Word Wise : Enabled
Print length : 241 pages
Lending : Enabled



The Genesis of a Divided Landscape

Southern California emerged as a land of promise, beckoning settlers with visions of prosperity and opportunity. However, beneath the alluring façade lay deep-seated divisions rooted in racial discrimination and inequality. Restrictive covenants and discriminatory lending practices segregated

neighborhoods, creating stark disparities in housing, education, and access to economic resources.



As the region's population surged, so did tensions between different racial and ethnic groups. The Watts Riots of 1965 erupted as a manifestation of pent-up frustration and inequality, leaving an enduring scar on the region's collective memory.

The Rise of the Automobile and Suburbanization

The advent of the automobile and the expansion of the highway system in the post-World War II era fueled a wave of suburbanization that dramatically transformed Southern California's landscape. White families

flocked to newly developed suburbs, seeking refuge from the perceived threats of urban life and the growing racial diversity of cities.



Suburbanization further reinforced racial segregation, as minorities were often excluded from these new communities. The resulting spatial divisions perpetuated inequalities in access to quality schools, healthcare, and economic opportunities.

The Economic Engine and its Spatial Consequences

Southern California's economic prowess, fueled by industries such as aerospace, manufacturing, and entertainment, attracted a diverse workforce from around the globe. However, the distribution of economic benefits was far from equitable.



Immigrants and low-wage workers often toiled in low-paying jobs, concentrated in segregated neighborhoods and burdened by substandard housing and environmental hazards. The spatial disparities in economic opportunities mirrored and reinforced the region's racial and ethnic divisions.

Contesting Space and Challenging Inequality

Despite the entrenched patterns of segregation and inequality, Southern California has also been a crucible of resistance and activism. The Civil Rights Movement and subsequent social justice movements mobilized communities to challenge discrimination and demand fair housing, equitable education, and economic justice.



Grassroots organizations and community leaders fought tirelessly to break down barriers and create more inclusive and equitable communities. Their efforts have left an enduring legacy of activism and a commitment to social justice.

The Legacy and the Path Forward

The interplay of race, space, and capital in Southern California has left an indelible mark on the region's past, present, and future. The legacies of segregation, suburbanization, and economic inequality continue to shape the region's social and economic landscape.

However, the region's history also holds lessons of resilience and the power of collective action. The ongoing struggles for racial justice and economic equity provide a roadmap for a more inclusive and just future.

By understanding the complex dynamics of race, space, and capital in Southern California, we gain invaluable insights into the forces that have shaped the region and the challenges that lie ahead. This knowledge empowers us to work towards creating a more equitable and just society for all who call Southern California home.



Inland Shift: Race, Space, and Capital in Southern California

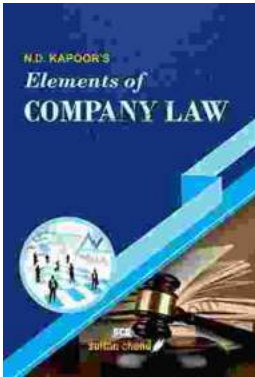
★★★★★ 5 out of 5

Language : English
File size : 7844 KB
Text-to-Speech : Enabled
Screen Reader : Supported
Enhanced typesetting : Enabled
Word Wise : Enabled
Print length : 241 pages
Lending : Enabled



Charles The Bold Illustrated: An Epic Journey Through Life, Love, and Legacy

Step into the captivating world of Charles the Bold, Duke of Burgundy, as renowned historian Robert Schlesinger presents a meticulously illustrated masterpiece that breathes...



Unveiling the Ultimate Guidebook for Commerce Professionals: For Com LLB CA CS CMA COM MBA and Other Commerce Courses

Embark on a comprehensive journey through the multifaceted world of commerce with "For Com LLB CA CS CMA COM MBA and Other Commerce Courses." This definitive guidebook is...